

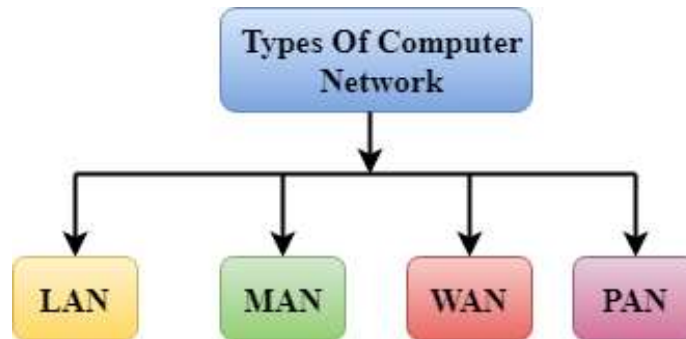


Computer

Class – VIII (18-April-2020)

Ch. – 1 (Networking Concept)

- A computer network can be categorized by their size. A **computer network** is mainly of **four types**:



LAN (Local Area Network)

- Local Area Network is a group of computers connected to each other in a small area such as building, office.
- LAN is used for connecting two or more personal computers through a communication medium such as twisted pair, coaxial cable, etc.
- It is less costly as it is built with inexpensive hardware such as hubs, network adapters, and ethernet cables.
- The data is transferred at an extremely faster rate in Local Area Network.
- Local Area Network provides higher security.



PAN (Personal Area Network)

- Personal Area Network is a network arranged within an individual person, typically within a range of 10 meters.
- Personal Area Network is used for connecting the computer devices of personal use is known as Personal Area Network.
- **Thomas Zimmerman** was the first research scientist to bring the idea of the Personal Area Network.
- Personal computer devices that are used to develop the personal area network are the laptop, mobile phones, media player and play stations.



MAN (Metropolitan Area Network)

- A metropolitan area network is a network that covers a larger geographic area by interconnecting a different LAN to form a larger network.
- Government agencies use MAN to connect to the citizens and private industries.
- In MAN, various LANs are connected to each other through a telephone exchange line.
- It has a higher range than Local Area Network(LAN).

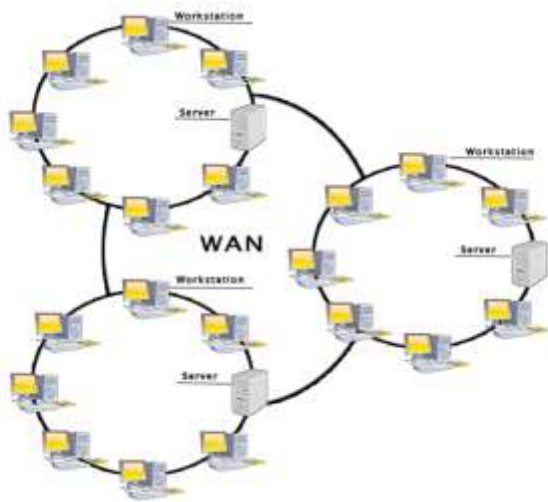


Uses of Metropolitan Area Network:

- MAN is used in communication between the banks in a city.
- It can be used in an Airline Reservation.
- It can be used in a college within a city.
- It can also be used for communication in the military.

WAN(Wide Area Network)

- A Wide Area Network is a network that extends over a large geographical area such as states or countries.
- A Wide Area Network is quite bigger network than the LAN.
- A Wide Area Network is not limited to a single location, but it spans over a large geographical area through a telephone line, fibre optic cable or satellite links.
- The internet is one of the biggest WAN in the world.
- A Wide Area Network is widely used in the field of Business, government, and education.



Answer these questions:

Q1) Define: LAN, MAN, WAN, PAN

Q2) Write the differences between LAN and WAN